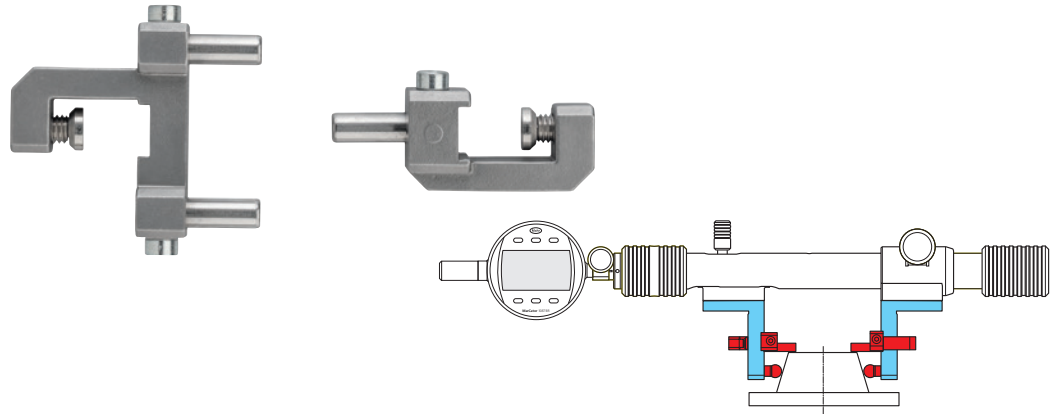


Multimar 844 Tw

Depth Stops for 844 Tma, 844 Tmi, 844 Te

FEATURES

- Stops with stall protected 3-point support
- Hardened stop pins
- Interchangeable and adjustable

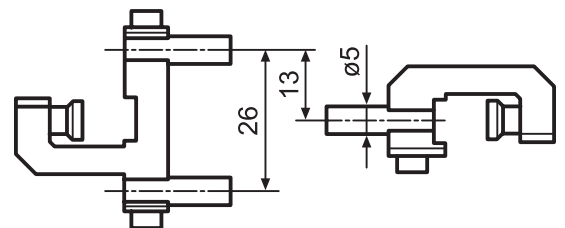


Application:

- For adjustment of the measuring depth in horizontal measuring position
- Precise stops in one plane for repeatable measurements
- To be mounted on 844 Tma, 844 Tmi, 844 Te
- For easy setting of the measuring depth, a mm scale is engraved on the measuring arms 844 Tma, 844 Tmi and 844 Te
- For precise setting of the measuring depth (i.e. for taper measurements) gage blocks can be used

TECHNICAL DATA

Order no.	Quantity unit	Product type
4503109	Pair	844 Tw

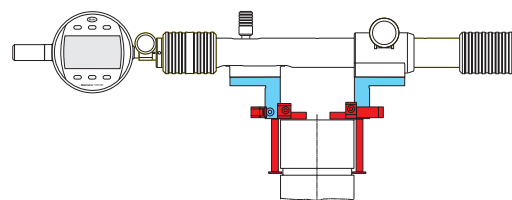


Multimar 844 Tma / 844 Tmi

Mounting Attachment

FEATURES

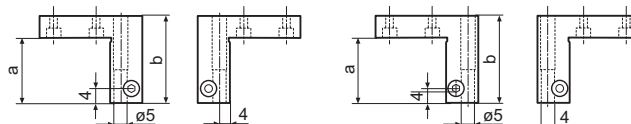
- For outside (844 Tma) and inside diameters (844 Tmi)
- Stainless steel
- Lateral mm scale for easy positioning and adjustment of measuring limit stops
- Reversible measuring arms on measuring arm holders to increase the measuring range
- With $\varnothing 5$ mm mounting bore for inserting interchangeable 844 Ta, 844 Ti, 844 Tb, 844 Tc, 844 Td, 844 Tz and 844 Tv measuring anvils



TECHNICAL DATA

Order no.	Mounting hole	Quantity unit	Product type
	mm		
4503030	5	Pair	844 Tma
4503031	5	Pair	844 Tmi

Order no.	a	b	Mounting hole
	mm	mm	mm
4503030	24	32	5
4503031	24	32	5

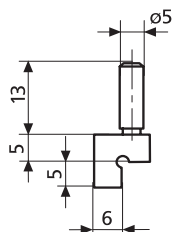


844 Tmi

844 Tma



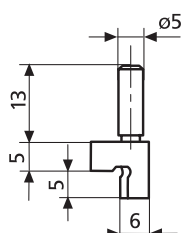
25 Eba



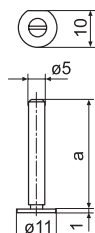
844 Ta

ACCESSORIES

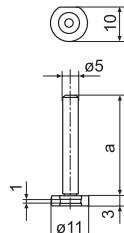
Order no.	Product name	Quantity unit	Product type
4119010	Measuring tips for drill hole intervals, $\varnothing 2-20$ mm	Piece	25 Eba
4119011	Measuring tips for drill hole intervals, $\varnothing 10-40$ mm	Piece	25 Eba
4500050	Shoulder anvils, flat, hardened steel	Pair	844 Ta
4500055	Shoulder anvils, spherical, hardened steel	Pair	844 Ti
4503015	Measuring anvils with measuring blades, platelet diameter 11 mm, adjustment range 0 –20 mm	Piece	844 Tb
4503016	Measuring anvils with measuring blades, platelet diameter 11 mm, adjustment range 20 –40 mm	Piece	844 Tb
4503017	Anvils with round measuring faces, diameter 11 mm, adjustment range 0 –20 mm	Piece	844 Td
4503018	Anvils with round measuring faces, diameter 11 mm, adjustment range 20 –40 mm	Piece	844 Td
4503109	Depth stops for 844 Tma, 844 Tmi, 844 Te	Pair	844 Tw
4503114	Measuring anvils with measuring blades, platelet length 20 mm, adjustment range 0 –20 mm	Piece	844 Tc
4503115	Measuring anvils with measuring blades, platelet length 20 mm, adjustment range 20 –40 mm	Piece	844 Tc



844 Ti



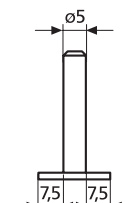
844 Tb



844 Td



844 Tc



844 Tw

Multimar 844 Tms

Mounting Attachments offset by 90°

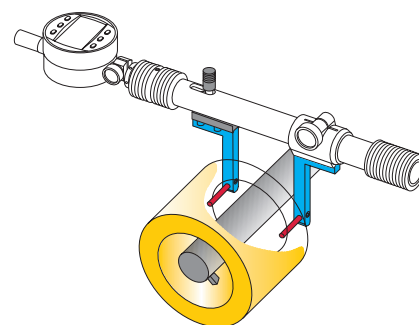
FEATURES

- For outer and inner diameters
- Stainless steel
- Reversible measuring arms on measuring arm holders to increase the measuring range
- With $\varnothing 5$ mm holder for inserting interchangeable 844 Ta, 844 Ti, 844 Tb, 844 Tc, 844 Td, 844 Tz and 844 Tv measuring anvils



Application:

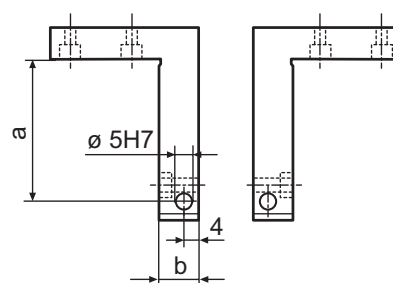
- For measuring outer and inner dimensions with side probes:
 - In flat recesses
 - In holes with center hub
 - In holes with retracted drill rod



TECHNICAL DATA

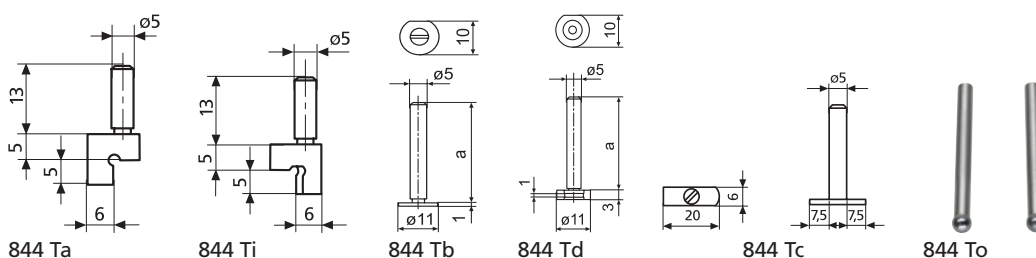
Order no.	Mounting hole	Throat depth	Quantity unit	Product type
	mm	mm		
4503040	5	50	Pair	844 Tms
4503041	5	100	Pair	844 Tms

Order no.	b	Mounting hole
	mm	mm
4503040	12	5
4503041	12	5



ACCESSORIES

Order no.	Product name	Product type
4500050	Shoulder anvils, flat, hardened steel	844 Ta
4500055	Shoulder anvils, spherical, hardened steel	844 Ti
4503015	Measuring anvils with measuring blades, platelet diameter 11 mm, adjustment range 0 –20 mm	844 Tb
4503016	Measuring anvils with measuring blades, platelet diameter 11 mm, adjustment range 20 –40 mm	844 Tb
4503017	Anvils with round measuring faces, diameter 11 mm, adjustment range 0 –20 mm	844 Td
4503018	Anvils with round measuring faces, diameter 11 mm, adjustment range 20 –40 mm	844 Td
4503114	Measuring anvils with measuring blades, platelet length 20 mm, adjustment range 0 –20 mm	844 Tc
4503115	Measuring anvils with measuring blades, platelet length 20 mm, adjustment range 20 –40 mm	844 Tc
4503119	Measuring anvils, ball diameter 6 mm, adjustment range 20 –40 mm	844 To

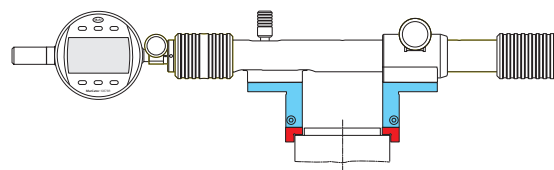


Multimar 844 Ta

Shoulder Anvils

FEATURES

- With cylindrical mounting shaft to attach into mounting attachments 844 Tma, 844 Tmi, 844 Tms
- Flat, for external diameter
- Made of hardened steel



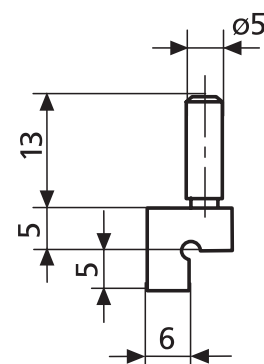
Application:

- For narrow collars such as centering shoulders and other similar measuring tasks

TECHNICAL DATA

Order no.	Mounting shaft diameter	Quantity unit	Product type
4500050	mm 5	Pair	844 Ta

Order no.	Mounting ϕ d
4500050	mm 5

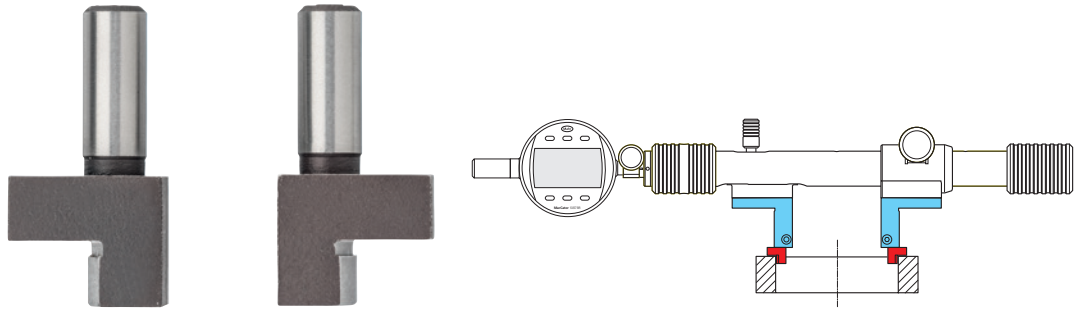


Multimar 844 Ti

Shoulder Anvils

FEATURES

- With cylindrical mounting shaft to attach into mounting attachments 844 Tma, 844 Tmi, 844 Tms
- Semi-cylindrical, for internal diameters
- Made of hardened steel



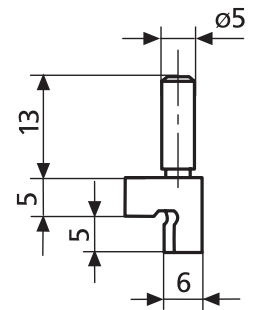
Application:

- For narrow collars such as centering shoulders and other similar measuring tasks

TECHNICAL DATA

Order no.	Mounting shaft diameter	Quantity unit	Product type
4500055	mm 5	Pair	844 Ti

Order no.	Mounting ϕ d
4500055	mm 5



Multimar 844 Tb

Measuring Anvils with Measuring Blades

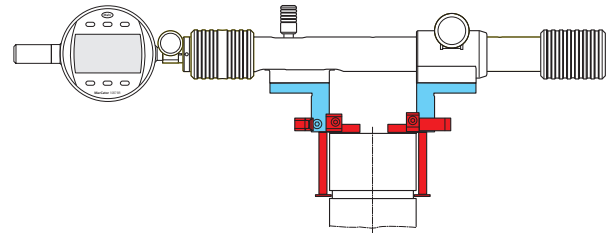
FEATURES

- With cylindrical mounting shaft to attach into mounting attachments 844 Tma, 844 Tmi, 844 Tms
- Can be moved in the mounting attachment for setting the measuring depth
- With round measuring blade for inner and outer measurements
- Suitable for workpieces with narrow recesses up to 3 mm deep
- Made of hardened steel



Application:

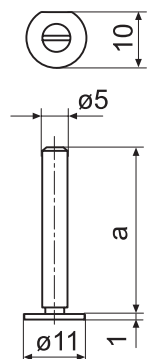
- For measuring centering shoulders and recesses on internal and external diameters; consists of a pin type holder, which is be moved to set the measuring depth in Mounting Attachment 844 Tm and a mounted measuring blade



TECHNICAL DATA

Order no.	Adjustment range	Mounting shaft diameter	Quantity unit	Product type
	mm	mm		
4503015	0 –20	5	Piece	844 Tb
4503016	20 –40	5	Piece	844 Tb

Order no.	a	Mounting ϕ d
	mm	mm
4503015	30	5
4503016	50	5

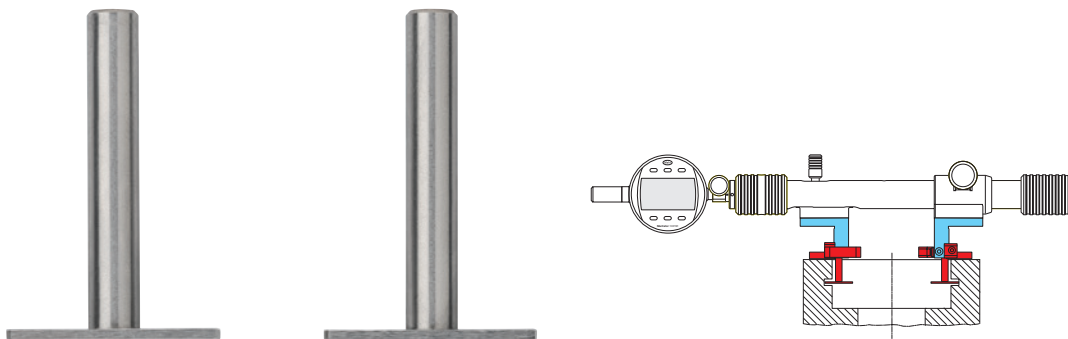


Multimar 844 Tc

Measuring Anvils with Measuring Blades

FEATURES

- With cylindrical mounting shaft to attach into mounting attachments 844 Tma, 844 Tmi, 844 Tms
- Can be moved in the mounting attachment for setting the measuring depth
- With long measuring blade
- Suitable for workpieces with narrow recesses up to 7.5 mm deep
- Made of hardened steel



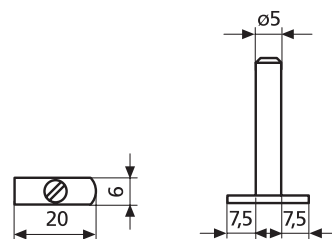
Application:

- For measuring centering shoulders and recesses on internal and external diameters; consists of a pin type holder, which is be moved to set the measuring depth in Mounting Attachment 844 Tm and a mounted measuring blade

TECHNICAL DATA

Order no.	Adjustment range mm	Mounting shaft diameter mm	Quantity unit	Product type
4503114	0 -20	5	Piece	844 Tc
4503115	20 -40	5	Piece	844 Tc

Order no.	a mm	Mounting ϕ d mm
4503114	30	5
4503115	50	5



Multimar 844 Td

Anvils with round Measuring Faces

FEATURES

- With cylindrical mounting shaft to attach into mounting attachments 844 Tma, 844 Tmi, 844 Tms
- Made of hardened steel
- Can be moved in the mounting attachment for setting the measuring depth
- Circular probe for inner and outer measurements
 - ϕ 11 mm spherical (R=8 mm)
 - plane measuring surface (6 x 1 mm)



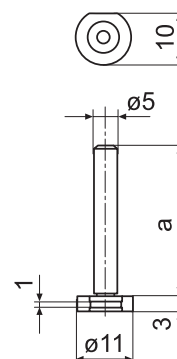
Application:

For measuring internal and external dimensions on round or cylindrical parts

TECHNICAL DATA

Order no.	Adjustment range mm	Mounting shaft diameter mm	Quantity unit	Product type
4503017	0 -20	5	Piece	844 Td
4503018	20 -40	5	Piece	844 Td

Order no.	a mm	Mounting ϕ d mm
4503017	30	5
4503018	50	5

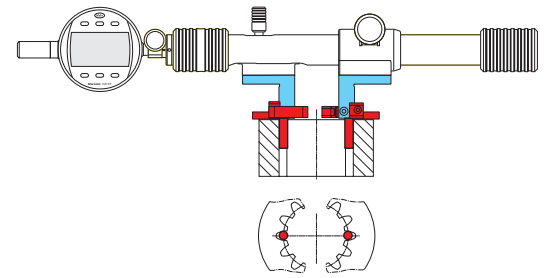


Multimar 844 Tz

Cylindrical Measuring Pins

FEATURES

- With cylindrical holding shaft for fixing in 844 Tma / 844 Tmi mounting attachments
- Made of hardened steel



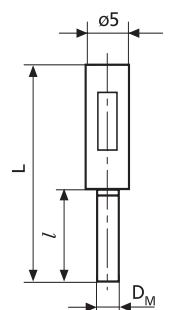
Application:

- Determination of the dimension over 2 pins for inner and outer gears

TECHNICAL DATA

Order no.	D	Mounting shaft diameter	Manufacturing tolerance +/-	Quantity unit	Product type
	mm	mm	µm		
4500500	1	5	2	Pair	844 Tz
4500501	1.25	5	2	Pair	844 Tz
4500502	1.5	5	2	Pair	844 Tz
4500503	1.75	5	2	Pair	844 Tz
4500504	2	5	2	Pair	844 Tz
4500506	2.5	5	2	Pair	844 Tz
4500507	3	5	2	Pair	844 Tz
4500508	3.5	5	2	Pair	844 Tz
4500509	4	5	2	Pair	844 Tz
4500510	4.5	5	2	Pair	844 Tz
4500511	5	5	2	Pair	844 Tz
4500512	5.5	5	2	Pair	844 Tz
4500513	6	5	2	Pair	844 Tz

Order no.	D	Dimension L	l	Mounting ø d
	mm	mm	mm	mm
4500500	1	19.5	6	5
4500501	1.25	19.5	6	5
4500502	1.5	19.5	6	5
4500503	1.75	23.5	10	5
4500504	2	23.5	10	5
4500506	2.5	23.5	10	5
4500507	3	28.5	15	5
4500508	3.5	28.5	15	5
4500509	4	28.5	15	5
4500510	4.5	33.5	20	5
4500511	5	33.5	20	5
4500512	5.5	33.5	20	5
4500513	6	33.5	20	5

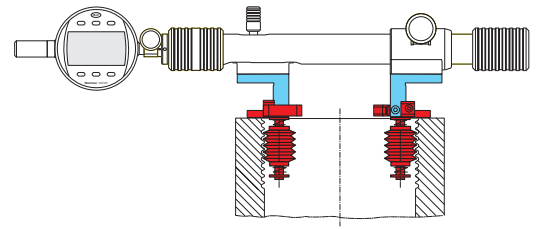
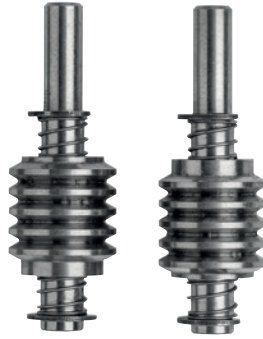


Multimar 844 Tv

Interchangeable Measuring Rollers

FEATURES

- With cylindrical holding shaft for fixing in 844 Tma / 844 Tmi mounting attachments
- Made of hardened steel
- Each with two springs to aid insertion in correct thread turn
- Contact rollers for other thread pitches (metric 60°) as well as for Whitworth and UST thread on request



Application:

- Determining the pitch diameter of outer and inner threads

TECHNICAL DATA

Order no.	Flank angle	Type of thread	Thread parameter	Thread pitch	Thread pitch	Quantity unit	Product type
				TPI	mm		
4501705	60°	Metric thread	Pitch diameter		0.5	Pair	844 Tv
4501706	60°	Metric thread	Pitch diameter		0.6	Pair	844 Tv
4501707	60°	Metric thread	Pitch diameter		0.7	Pair	844 Tv
4501708	60°	Metric thread	Pitch diameter		0.75	Pair	844 Tv
4501709	60°	Metric thread	Pitch diameter		0.8	Pair	844 Tv
4501710	60°	Metric thread	Pitch diameter		0.9	Pair	844 Tv
4501711	60°	Metric thread	Pitch diameter		1	Pair	844 Tv
4501712	60°	Metric thread	Pitch diameter		1.25	Pair	844 Tv
4501713	60°	Metric thread	Pitch diameter		1,5	Pair	844 Tv
4501714	60°	Metric thread	Pitch diameter		1.75	Pair	844 Tv
4501715	60°	Metric thread	Pitch diameter		2	Pair	844 Tv
4501716	60°	Metric thread	Pitch diameter		2.5	Pair	844 Tv
4501717	60°	Metric thread	Pitch diameter		3	Pair	844 Tv
4501718	60°	Metric thread	Pitch diameter		3.5	Pair	844 Tv
4501719	60°	Metric thread	Pitch diameter		4	Pair	844 Tv
4501720	60°	Metric thread	Pitch diameter		4.5	Pair	844 Tv
4501721	60°	Metric thread	Pitch diameter		5	Pair	844 Tv
4501722	60°	Metric thread	Pitch diameter		5.5	Pair	844 Tv
4501723	60°	Metric thread	Pitch diameter		6	Pair	844 Tv

Multimar 844 Tv

Interchangeable Measuring Rollers

Order no.	Flank angle	Type of thread	Thread parameter	Thread pitch TPI	Thread pitch mm	Quantity unit	Product type
4501750	55°	Whitworth thread	Pitch diameter	6		Pair	844 Tv
4501751	55°	Whitworth thread	Pitch diameter	7		Pair	844 Tv
4501752	55°	Whitworth thread	Pitch diameter	8		Pair	844 Tv
4501753	55°	Whitworth thread	Pitch diameter	9		Pair	844 Tv
4501754	55°	Whitworth thread	Pitch diameter	10		Pair	844 Tv
4501755	55°	Whitworth thread	Pitch diameter	11		Pair	844 Tv
4501756	55°	Whitworth thread	Pitch diameter	12		Pair	844 Tv
4501757	55°	Whitworth thread	Pitch diameter	13		Pair	844 Tv
4501758	55°	Whitworth thread	Pitch diameter	14		Pair	844 Tv
4501759	55°	Whitworth thread	Pitch diameter	16		Pair	844 Tv
4501760	55°	Whitworth thread	Pitch diameter	18		Pair	844 Tv
4501761	55°	Whitworth thread	Pitch diameter	19		Pair	844 Tv
4501762	55°	Whitworth thread	Pitch diameter	20		Pair	844 Tv
4501763	55°	Whitworth thread	Pitch diameter	22		Pair	844 Tv
4501764	55°	Whitworth thread	Pitch diameter	24		Pair	844 Tv
4501765	55°	Whitworth thread	Pitch diameter	28		Pair	844 Tv
4501766	55°	Whitworth thread	Pitch diameter	30		Pair	844 Tv
4501767	55°	Whitworth thread	Pitch diameter	32		Pair	844 Tv
4501768	55°	Whitworth thread	Pitch diameter	36		Pair	844 Tv
4501769	55°	Whitworth thread	Pitch diameter	40		Pair	844 Tv
4501800	60°	UST thread	Pitch diameter	6		Pair	844 Tv
4501801	60°	UST thread	Pitch diameter	7		Pair	844 Tv
4501802	60°	UST thread	Pitch diameter	8		Pair	844 Tv
4501803	60°	UST thread	Pitch diameter	9		Pair	844 Tv
4501804	60°	UST thread	Pitch diameter	10		Pair	844 Tv
4501805	60°	UST thread	Pitch diameter	11		Pair	844 Tv
4501806	60°	UST thread	Pitch diameter	12		Pair	844 Tv
4501807	60°	UST thread	Pitch diameter	13		Pair	844 Tv
4501808	60°	UST thread	Pitch diameter	14		Pair	844 Tv
4501809	60°	UST thread	Pitch diameter	16		Pair	844 Tv
4501810	60°	UST thread	Pitch diameter	18		Pair	844 Tv
4501811	60°	UST thread	Pitch diameter	19		Pair	844 Tv
4501812	60°	UST thread	Pitch diameter	20		Pair	844 Tv
4501813	60°	UST thread	Pitch diameter	22		Pair	844 Tv
4501814	60°	UST thread	Pitch diameter	24		Pair	844 Tv
4501815	60°	UST thread	Pitch diameter	28		Pair	844 Tv
4501816	60°	UST thread	Pitch diameter	30		Pair	844 Tv
4501817	60°	UST thread	Pitch diameter	32		Pair	844 Tv
4501818	60°	UST thread	Pitch diameter	36		Pair	844 Tv
4501819	60°	UST thread	Pitch diameter	40		Pair	844 Tv